

Final Version

知立市
Chiryu City

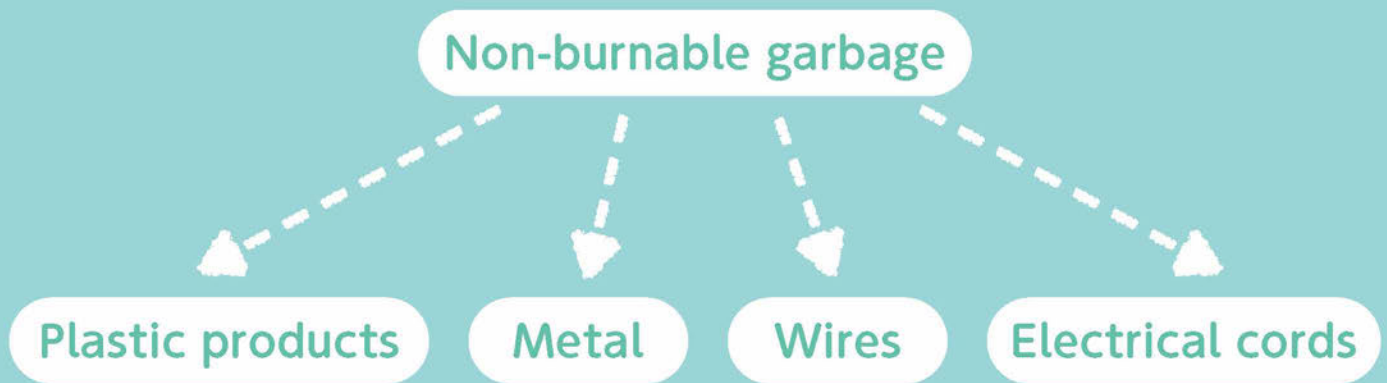
英語版
English Version

ごみだし ガイドブック

Garbage Disposal Guide

How to separate and dispose of garbage

The rules for recyclables and non-burnable garbage collection points and separation of non-burnable garbage will change as of April 2019.



Environmental Affairs Division, Citizen Affairs Department, Chiryu City

3-1 Hiromi, Chiryu-shi, 472-8666

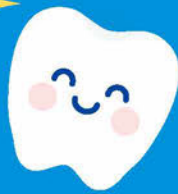
☎95-0126 FAX83-9765



The information listed in this Garbage Disposal Guide is current as of March 1, 2019.

Chiryu City Scinex Corporation

オカダ歯科 クリニックからの ご案内



無料相談

こどもの 歯並び矯正

(中学3年生までの方対象)

無料健診

成人歯科健診

妊産婦歯科健診

(市の助成を利用した無料健診です)



院長の岡田 実です。
当院は 歯科医師免許(第131179号)取得
こどもの笑顔で
あふれています

ワクワク楽しい 歯医者さんへようこそ!

平日午前のみ
保育士による
無料託児サービス
を行っております

無料処置
こどもの
虫歯予防



医療法人
オカダ歯科クリニック

〒472-0058 愛知県知立市上重原2丁目65番地

0120-84-3118

今すぐお電話を♪

妊婦さんを対象とした
歯科治療も行っております



24時間ネットで
かんたん予約

PC・携帯・スマホ
OK!



オカダ歯科クリニック

検索

<http://chiryu-okada-hc.com/>



Garbage Disposal Facility Information

Non-Burnable Garbage Treatment Plant [inside Itahari, Yamayashiki-cho, Chiryu-shi (Next to Chiryu Driving School)]

☎95-0126

Contact (Weekdays only): Waste Reduction Section, Environmental Affairs Division, Chiryu City Hall

● What can be brought in

Recyclables, non-burnable garbage, waste paper, waste garments, cooking oil, and household computers

● Days and times garbage is accepted

Every day except Wednesday
9:00-12:00 and 13:00-16:00

* Closed on public holidays that fall on weekdays and the New Year's holiday

● Fee

Only landfill waste requires a fee (20 yen per 10 kg). However, there is no fee if the load per day is less than 100 kg.



Clean Center (46 Higashida, Hajodo-cho, Kariya-shi)

☎21-5389

● What can be brought in

Burnable garbage and oversized garbage (Plastic products, metal, consumer electronics, newspaper, cardboard, magazines, empty cans, and plastic bottles can also be carried in at the same time.)

* Note that Magazines are different from the Recyclable Paper listed on p. 20; empty tissue boxes and snack boxes cannot be brought in.

● Days and times garbage is accepted

Monday-Saturday (including public holidays)
8:30-12:00 and 13:00-16:00

* Closed on Sunday and the New Year's holiday

● Fee

Free

* General business waste can be carried in for a fee of 100 yen per 10 kg.



<Advertisement>

一般廃棄物から産業廃棄物まで、毎日 定期 随時 収集

飲食店・小売店
その他店舗

事務所・ご家庭
引越し・大掃除

工場・建設現場
倉庫・イベント会場

生ごみ・紙ごみ・缶・ビン・ペットボトル・
発泡スチロール・プラスチックごみ
家具／家電類・機械類・放置自転車など

回収地域
知立・安城・刈谷・高浜
岡崎・豊田・碧南

分別作業、片付け運び出し、処分場への運搬もおまかせ下さい!

株式会社 トーアクリーン

<http://www.toaclean.jp/>

☎ 0566-92-7770

少量からでもOKです! **見積無料**

本社 / GOMIリサイクル工場 愛知県安城市根崎町東新切2番地2 ISO14001 認証取得事務所



How to Dispose of Garbage

Burnable garbage collection routes and neighborhood garbage collection points can be found on the Chiryu City website under "Chiryu City Map Service."

* If your home does not face a burnable garbage route, speak with other residents or the local leader and determine where the garbage should be placed.

Follow the separation rules and dispose of garbage on the designated days and times!

| Garbage Category | Collection Category | Collection Day | Collection Point | Details | | |
|---|---------------------|---|--|----------------------|---|-----|
| Burnable garbage | Burnable garbage | City-wide Mon. & Fri. 5:00-8:00 | Burnable garbage collection route or the Clean Center (Note 1) | P4 | | |
| Plastic containers and packaging | Recyclables | For Monday collection areas Mon. 16:00-20:00 Tue. 6:00-8:00 For Wednesday collection areas Wed. 16:00-20:00 Thu. 6:00-8:00 * Recyclables and non-burnable garbage are collected every other week. Please see the Chiryu City Garbage Collection Schedule for what garbage is collected and when. | Neighborhood collection points or the Non-Burnable Garbage Treatment Plant (Note 1) | P6 | | |
| Glass bottles used for food and beverages (White, black, brown, blue/green, etc.) | | | | P7 | | |
| Aluminum cans | | | | P8 | | |
| Steel cans | | | | P9 | | |
| Plastic bottles | | | | P10 | | |
| Plastic products | | | | Non-burnable garbage | Neighborhood collection points or the Non-Burnable Garbage Treatment Plant (Note 1) | P11 |
| Metal | | | | | | P12 |
| Consumer electronics | | | | | | P13 |
| Wire | | | | | | P14 |
| Electrical cords | | | | | | P14 |
| Aerosol cans | | | | | | P15 |
| Glass & ceramics | | | | | | P16 |
| Landfill waste | | | | | | P17 |
| Hazardous waste | | | | P17 | | |
| Oversized garbage | Oversized garbage | Direct delivery only | Clean Center (Note 1) | P18 | | |
| Waste garments | Waste garments | Direct delivery or collection on days specified by neighborhood association, etc. | Collection points specified by neighborhood association, etc. or the Non-Burnable Garbage Treatment Plant (Note 1) | P19 | | |
| Waste paper (Newspaper, cardboard, cartons, recyclable paper) | Waste paper | Direct delivery or collection on days specified by neighborhood association, etc. | Collection points specified by neighborhood association, etc. or the Non-Burnable Garbage Treatment Plant (Note 1) | P20 | | |

(Note 1) Please see p. 1 for times and days of the week during which the Clean Center and the Non-Burnable Garbage Treatment Plant are open.

* Some neighborhood associations do not collect waste garments and waste paper. For collection days, see the city website or the Chiryu Newsletter published on the first of each month.

* Some apartment buildings should take out their garbage to designated collection points.

<Advertisement>

不用品が出たら即相談ください! 私たちはリサイクルに努めています

『一般廃棄物収集運搬許可業者』だから安心!

弊社は、環境保全を社訓にし、不用品でお困りの方、ご高齢の方、その他に渡り、不用品引取りサービスを主流に展開しております。



**無料見積り!
迅速対応!**

不用品の引き取り処分・引越し・倉庫・事務所、
店舗の片付け・遺品整理・夜逃げ処理など

TNK リサイクルサービス

古物商許可 愛知県公安委員会 第543839500300号 / 古物行商許可 愛知県公安委員会 安第9500101号



GROUP N
<http://group-n.com>

知立市牛田 1-8 TEL 0566-83-1117

Common Rules for Neighborhood Garbage Collection Points

- Users are to replace bins, containers, and so on.
- Make sure to take the garbage out on time and try to minimize the amount of noise.

| Neighborhood garbage collection points (Recyclables, Non-Burnable Garbage) | | | |
|--|---|--|--|
| Monday collection areas | | Wednesday collection areas | |
| Nagashino-cho area (Includes parts of Hiromi, Koei, and Nagata) | Nagashino-cho Kominkan-mae Koei Koen | Yamayashiki-cho area | Mukoda Syokoen-higashi |
| Nakayama-machi area (includes parts of Shinchi-cho and Uchisaiwai-cho) | Nakayama Shiei Jutaku-mae | Yama-machi area (includes parts of Toei and Uchisaiwai-cho) | Yama-machi-ku Kominkan-minami |
| Shinchi-cho (Horikiri and Shintomi) area (Including parts of Minamishinchi, Koei, and Nagata) | Mikawa Chiryu Eki-minami Horikiri 2-go Chushajo-minami | Naka-machi area | Hoken Senta Chushajo-nai |
| Hon-machi area (Includes parts of Sakuragi-cho and Sakae) | Hoken Senta Chushajo-nai | Yatsuda-cho area | Yatsuda-cho Kominkan-mae Yatsuda Jinja-ura |
| Takara-machi & Ikehata area (includes parts of Sakae, Takara, and Torii) | Takara-machi Kyu Kominkan Atochi-yoko Ikehata Koen-kita | Ushita-cho area (Includes Ushida 1 & 2-chome) | Ushita-cho Kominkan-mae Hiroba Takane Shukajyo Ushita Hokubu Kominkan-kita |
| Nishi-machi area (includes part of Sakuragi-cho) | Fukushi Taiikukan Minami Chushajo-nai Nishi-machi Shukaijo Iwase Geka-ura Nishi-machi Kuramae Fukushi Taiikukan Dai 3 Chushajo-tonari | Nanyo area (includes Shinike) | Ohayashi Koen Amakoda Jido Yuen |
| | | Yatsuhashi-cho area | Haimu Tojo-kita Shiei Yatsubashi Jutaku-nishi Onagare (Tetto-shita) |
| Aizuma-cho area | Marutsubo Koen-minami Aizuma Kominkan-mae Meiji Gyunyuten-kita Kanayama Jutaku | Raikoji-cho area | Raikoji-cho Okuwa Jinja |
| | | Showa 1-chome area | Sawatarigawa-zoi Meitetsu Ensen |
| | | Showa 2-chome area | Showa 5-go Koen-higashi Showa Gurando-higashi |
| Nishioka-cho area | Chiryu Pabirion-nishi | Showa 3-chome area | Showa 2-go Koen-higashi |
| Kamishigehara-cho area | Kamishigehara Kominkan-minami Kamishigehara Koen-higashi Torii 2-chome | Showa 3-chome 1 area | 33-goto-nishi |
| | | Showa 4-chome area | Showa 3-go Koen-nishi |
| | | Showa 5-chome area | Showa 4-go Koen-kita |
| Kobo-cho area | Kyu Kobo-cho Shukaijo-ato | Showa 6-chome area | 61-goto-minami 65-goto-higashi |
| Nishinaka-cho area | Nishinaka-cho Dai 2 Kominkan-mae Nishinaka-en Minami | Showa 7-chome area | 40-goto-minami 46-goto-higashi |
| Shinbayashi-cho area | Hirakusa Sagyosho Wareme-gawa Ryokuchi | Showa 8-chome area | 23-goto-minami |
| Yata-cho area | Kama Homu Senta Chiryu-ten-kita | Showa 9-chome area | 6-goto-nishi |

<Advertisement>

バイク・スクーター処分

さらに出張引取料・ナンバー廃車料もタダ!!



もちろん再販売できる
バイク・スクーターは高価買取いたします



無
料

電話連絡時かならず知立市ごみ分別ガイドブックを見たと言って下さい

BeALL

(株)ビーオール 買取出張は営業時間外も致します。

☎ 0120-42-8177 自動車公正取引協会会員店
商業二輪買取取扱認定店

営業時間/10:00~19:00 定休日/水曜、第2・3火曜

料

<http://www.beall.co.jp/> 安城市里町菖蒲池22-2 ビーオール 検索 クリック



Burnable garbage



Designated garbage bags: Yes

Items that can be thrown away

Kitchen waste, disposable diapers (solid waste must be flushed down the toilet), stuffed animals, video tapes, cassette tapes, golf balls, hoses, shoes, cutting boards, leather items, rubber products, dirty plastic bottles, dirty plastic containers and packaging, grass, leaves, branches, etc.



Key point!

- As collection times may change according to various circumstances, always be sure to take out garbage by 8:00 AM.

Garbage taken out after the garbage truck comes by will not be collected.



Hoses



Shoes including athletic shoes and ski boots



Cutting boards

These are all burnable garbage, even if there are plastic parts.

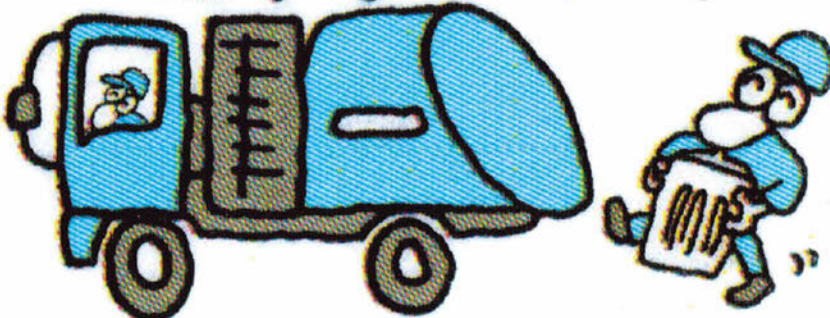
Items that cannot be thrown away

- Garbage that only has a designated garbage bag attached to it or garbage that does not fit entirely into a bag -> **Oversized garbage** (p. 18)
- Pruned branches that do not fit inside designated garbage bags should be delivered directly to the Clean Center (p. 1, p. 18).
(Limited to those no more than 2 m in length and 15 cm in diameter.)



<Advertisement>

どうかいびか



有限会社 東海美化

本 社

岡崎市下青野町字太田川原3番地2

Tel(0564)57-7211 Fax(0564)57-7233

豊田事業所

豊田市明和町2丁目47番地7

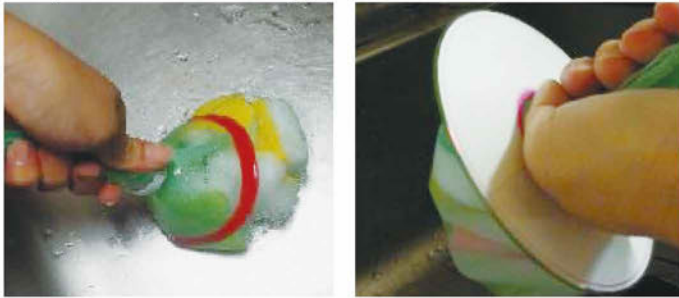
Tel/Fax(0565)24-1188

ごみの事なら当社に何でもご相談下さい!!

Please drain excess liquid from burnable garbage.

About 80% of kitchen waste is liquid. Draining excess liquid can reduce the amount of burnable garbage and limit odors, which also helps prevent burnable garbage from being strewn on the street by crows and cats.

<Example of draining excess liquid>



For those reluctant to squeeze excess liquid from kitchen waste with their hands, using a CD or plastic bottle can help easily squeeze excess liquid without causing discomfort.

There are free rental systems and purchase subsidy systems for electric kitchen waste treatment machines.



Weight before draining (597g)

Weight after draining (255g)

Dried kitchen waste



An electric kitchen waste treatment machine for rental to residents

In order to reduce the amount of garbage generated by each home, the city offers free electric kitchen waste treatment machine rentals and the following assistance for purchasing electric kitchen waste treatment machines.

For more information on how to apply, contact the Environmental Affairs Division or see the Chiryu City website. Please apply within 30 days of purchase.

| | Subsidy total | Condition |
|--|---|---|
| Electric kitchen waste treatment machine | Subsidy equal to 1/2 the total price (up to 20,000 yen) | 1 unit per household (Replacements may be purchased after 5 years.) |
| Compost container | Subsidy equal to 1/2 the total price (up to 3,000 yen) | 1 unit per household (Replacements may be purchased after 3 years) |
| Bokashi container | Subsidy equal to 1/2 the total price (up to 1,500 yen) | 2 units per household (Replacements may be purchased after 3 years) |

<Advertisement>



一般家庭・店舗・オフィスクリーニング
ハウスクリーニングの全国チェーン

おそうじ本舗 知立店 見積り無料

人気No.1 エアコン分解洗浄
人気No.2 浴室まるごと洗浄

人気No.3 換気扇分解洗浄
おまかせ お手伝いパック

それぞれのご要望に合った、納得の頂ける技術とサービスをご提供

おそうじの ことなら プロにおまかせください!

代表: 玉内 真也



IICRC
Institute of Inspection Cleaning and Restoration Certification

IICRC 認定資格企業
世界的レベルのライセンスを持つプロクリーナー

ハードフロア

カーペットクリーニング

すく よい な 詳細はホームページを ↓ご覧ください↓

0120-359-417

〒472-0004 知立市南陽2丁目175

おそうじ本舗 知立店 検索





Plastic containers and packaging



Designated garbage bags: Yes

Items that can be thrown away

Food bags (snacks, bread, frozen food, etc.), plastic bottle labels and caps, plastic bags, plastic bottles [shampoo, detergent, etc. (including all pumps and nozzles, etc.)], plastic food trays, cups (yogurt, pudding, etc.), egg cartons, Styrofoam, etc.



In general, those items with a plastic identification code attached can be thrown away.



Key point!

Some items without a plastic identification code can also be thrown away.

- Nets (Nets for tangerines, onions, etc.)
 - Styrofoam and packaging (packaging wrapped around produce and protective material used with consumer electronics, etc.)
- * Items that are too big to fit in bags should be broken down and placed in the designated garbage bags.

Items that cannot be thrown away

- Plastic products other than containers and packaging -> **Plastic products** (p. 11) or **Oversized garbage** (p. 18).
- Leftover food and dirty containers -> **Burnable garbage** (p. 4)





Glass bottles used for food and beverages (White, black, brown, blue/green, etc.)

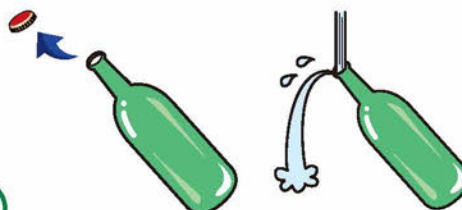


Designated garbage bags: No
Place directly into the blue bins at the collection point.

Items that can be thrown away

Glass bottles used for food and beverages (even if broken)

- [1] Remove the cap.
- [2] Rinse out the inside.
- [3] Separate by color (into 1 of 4 colors).



These are ready to be collected.



[1] White

[2] Black

[3] Brown

[4] Blue/green

Key point!

- Aluminum caps -> **Aluminum cans** (p. 8),
Steel caps -> **Steel cans** (p. 9)
- Items made from plastic such as plastic caps for 1-sho bottles (1.8 liter bottles) and other large bottles -> **Plastic products** (p. 11)



Items that cannot be thrown away

- Non-food and beverage glass bottles for cosmetics and medical products (other than oral drugs), etc. -> **Glass & ceramics** (p. 16)
- Leftover food and dirty containers -> **Landfill waste** (p. 17)



Aluminum cans



Designated garbage bags: No
Place directly into the containers or the blue bins at the collection point.

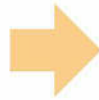
Items that can be thrown away

Aluminum cans and those items with this logo:



[1] Rinse the inside and crush slightly.

These are ready to be collected.



Key point!

- Aluminum caps and lids -> Aluminum cans,
Steel caps and lids -> Steel cans (p. 9)



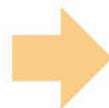
The lid is considered an Aluminum Can



The can is considered a Steel Can.

Items that cannot be thrown away

- Dirty or very rusty items -> Metal (p. 12)



Steel cans



Designated garbage bags: No
Place directly into the containers or the blue bins at the collection point.



Items that can be thrown away

Steel cans (bath salt cans and snack cans also apply), steel caps and lids and other items without this logo can also be thrown away. →



[1] Rinse the inside and throw out.



Key point!

- Steel lids for glass and other bottles are considered **Steel Cans**



Items that cannot be thrown away

- Dirty or very rusty items, as well as motor oil cans and other hard-to-clean items -> **Metal** (p. 12)





Plastic bottles



Designated garbage bags: No
Place directly into a gunny sack or the blue bins at the collection point.



Items that can be thrown away

Plastic bottles (bottles for beverages, alcohol, soy sauce, etc.) and items with this logo



- [1] Remove the cap and label.
- [2] Rinse the inside and crush slightly.

These are ready to be collected.



Key point!

- Labels and caps are considered **Plastic Containers and Packaging** (p. 6), while paper labels are considered **Burnable Garbage** (p. 4)
- Plastic bottles can also be taken to the following stores that help collect plastic bottles. (There are collection receptacles at or near the entrances.)
 - APiTA Chiryu
 - Piago Chiryu
 - Aoki Super Chiryu
 - Lawson Ushida Chiryu
 - Shokuhinkan Mimatsu Nakamachi
 - Domy Chiryu
 - Marutoyo Co., Ltd.
 - Shimobayashi K.K.

Items that cannot be thrown away

- Dirty plastic bottles -> **Burnable garbage** (p. 4)





Plastic products



Designated garbage bags: No

Place directly into the containers or the blue bins at the collection point.



Items that can be thrown away

Almost all items made with plastic, including buckets, planters, plastic clothes hangers, plastic baskets, CDs, DVDs, toys (with batteries removed), etc.



Items that cannot be thrown away

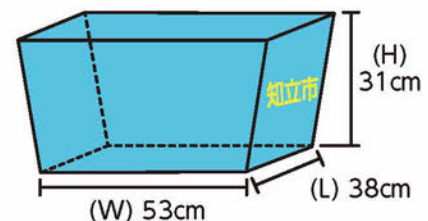
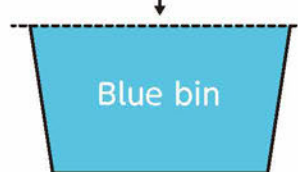
- Items larger than the blue bins (31 cm (H) × 53 cm (W) × 38 cm (L)) -> **Oversized garbage** (p. 18)
- Hoses -> **Burnable garbage** (p. 4)

There is the possibility these will become caught in Clean Center equipment and cause a malfunction!

When a malfunction occurs in Clean Center equipment, garbage cannot be processed until the equipment has been repaired.



The item can be thrown away if it fits in the blue bin.



Metal



Designated garbage bags: No
Place directly into the containers or the blue bins at the collection point.



Items that can be thrown away

Kettles, frying pans, pots, thermoses, objects with blades such as knives and scissors, dirty cans such as oil cans and paint cans, etc.
Items made from composite materials that include metal



Objects with blades should be wrapped in newspaper or cloth.

Items that cannot be thrown away

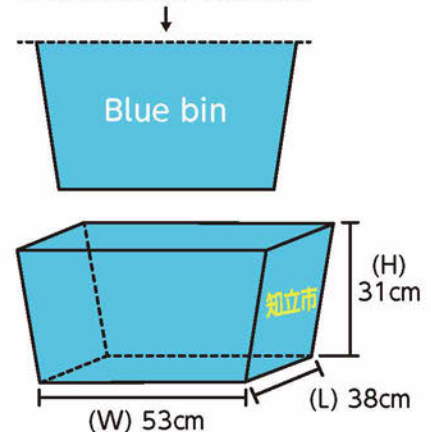
- Items larger than the blue bins (31 cm (H) × 53 cm (W) × 38 cm (L)) -> **Oversized garbage** (p. 18)
- Wire clothes hangers and umbrella frames -> **Wire** (p. 14)
- Electrical cords -> **Electrical cords** (p. 14)

There is the possibility these will become caught in Clean Center equipment and cause a malfunction!

When a malfunction occurs in Clean Center equipment, garbage cannot be processed until the equipment has been repaired.



The item can be thrown away if it fits in the blue bin.





Consumer electronics



Designated garbage bags: No
Place directly into the blue bins at the collection point.

Items that can be thrown away

Items that operate via electricity or batteries, including clothes irons, VCRs, boomboxes, hair dryers, microwaves, printers, calculators, digital cameras, rice cookers, remotes, cell phones, video game devices, etc.



Items that cannot be thrown away

- Items larger than the blue bins (31 cm (H) × 53 cm (W) × 38 cm (L)) -> **Oversized garbage** (p. 18)
- **Four designated types of home appliances** (TVs, air conditioners, washing machines and dryers, and refrigerators and freezers) (p. 21)
- Computers Computers can be brought to the Non-Burnable Garbage Treatment Plant. (p. 22)



Wire



Designated garbage bags: No
Place directly into the blue bins at the collection point.

Items that can be thrown away

Umbrella frames, chains, wire, wire clothes hangers, and other long, thin metal objects that may become caught in Clean Center equipment and cause a malfunction.



Key point!

- Only umbrella frames with the fabric portion removed that fit in the blue bins can be collected.



Electrical cords



Designated garbage bags: No
Place directly into the blue bins at the collection point.

Items that can be thrown away

Consumer electronics cords, extension cords, charger cables, earphones, power strips, and other long, thin objects that might become caught in Clean Center equipment and cause a malfunction.





Aerosol cans



Designated garbage bags: No
Place directly into the blue bins at the collection point.

Items that can be thrown away

Empty aerosol cans (gas cylinders, medical cans, cosmetics cans, etc.)



Key point!

- When emptying cans, do so in a well-ventilated area.
- Aerosol cans can be thrown away without opening holes in them.



Items that cannot be thrown away

- Aerosol cans that are not completely empty
Aerosol cans may explode while being collected!





Glass & ceramics



Designated garbage bags: No
Place directly into the blue bins at the collection point.

Items that can be thrown away

Mirrors, bowls, flowerpots, ceramic products, glass bottles for cosmetics and medical products (other than oral drugs), and other non-food and beverage glass bottles, etc.



Key point!

- Glass & Ceramics cannot be processed by the Clean Center. Make sure to remove any attached to Plastic Products or Oversized Garbage before placing in Glass & Ceramics.

Items that cannot be thrown away

- Crystal glass -> Landfill waste
- Glass bottles with leftover food or stains that cannot be removed -> Landfill waste
- Glass juice bottles, etc. -> [Glass bottles used for food and beverages]



Crystal glass



Landfill waste



Designated garbage bags: No
Place directly into the blue bins at the collection point.

Items that can be thrown away

Lighters (regardless of how empty they are), tiles, roof tiles, crystal glass, glass bottles with leftover food or stains that cannot be removed, concrete blocks, dirt from household gardens, ash, rocks, etc.



Key point!

- In cases of 100 kg or more, bring directly to the Non-Burnable Garbage Treatment Plant. The fee is 20 yen per 10 kg.
- When placing ash or dirt in a blue bin, first place in an appropriate bag so that it does not fall from the blue bin.

Items that cannot be thrown away

- Items demolished by businesses -> Industrial waste * Make a request to a demolition company.



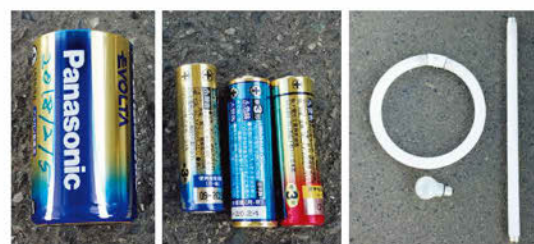
Hazardous waste



Designated garbage bags: No
Place directly into the blue bins at the collection point.

Items that can be thrown away

Fluorescent tubes (even if broken), alkaline batteries, watch batteries



Key point!

- Thermometers that use mercury are **only collected by the Non-Burnable Garbage Treatment Plant.**

Items that cannot be thrown away

- Place small rechargeable batteries (such as NiCd batteries, NiMH batteries, Li-ion batteries, etc.) in the recycling boxes at locations that help with recycling. See the JBRC website (<http://www.jbrc.com>) for more information on locations that help with recycling.



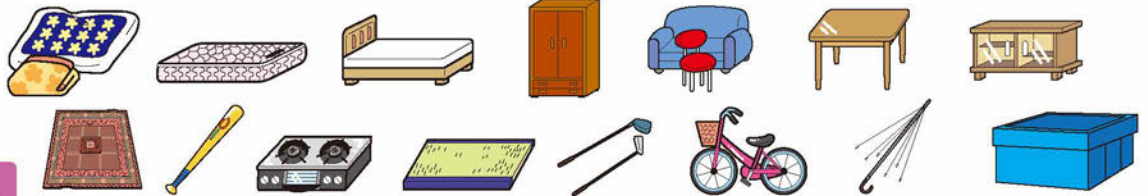


Oversized garbage

Bring directly to the Clean Center.

Items that can be thrown away

- Items larger than the blue bins (31 cm (H) × 53 cm (W) × 38 cm (L)) and under 1 m (L) × 1.5 cm (W) × 2 m (H)
- Futons, mattresses, beds, dressers, chairs, desks, shelves, carpet, glass tables, tatami mats, baseball bats, golf clubs, bicycles, umbrella frames, etc.



Key point!

- Remove the fabric portion from umbrellas, leaving just the umbrella frame.

Items that cannot be thrown away

- Glass items, enameled items, and concrete products -> Bring to the Non-Burnable Garbage Treatment Plant.

Transportation vehicle rental system for bringing in oversized garbage (brought in by users)

To make a reservation, call or go to the Environmental Affairs Division during city hall business hours. Reservations may be made the day of and up to one month before the desired day of use. **Note that the vehicle cannot be used for any other purpose other than bringing garbage to the Clean Center.**

• Fee

This service is free of charge. Starting in April 2019, users will be required to refuel the vehicle based on the amount used.

• Collection rental times (half days)

Monday-Saturday (including public holidays)
[1] 9:00-12:30 [2] 13:00-16:30



Door-to-door oversized garbage collection system (paid)

- To make a reservation, call or go to the Environmental Affairs Division during city hall business hours (Tel: 95-0126).
- Collected every Wednesday. Users can select the Wednesday on which they wish for the garbage to be collected, **starting from the following week.**
- On the collection day, stick an Oversized Garbage disposal ticket (1,000 yen per ticket, with one ticket per item) and take the garbage to **where a car can be parked such as a parking lot or garden by 8:00 AM.** * Items that do not have Oversized Garbage disposal tickets attached will not be collected.

Oversized Garbage disposal tickets are sold at the city hall and some convenience stores and so on.



<Advertisement>

お手元の不用品、1品からでもご連絡ください!

**どんな不用品でも
ご相談ください**

**お見積もり
無料!!**



遺品整理を
どうしよう

不用品が
いつの間にか
たまってしまった

引っ越しで
処分に困った

会社の機密書類
シュレッダーに
かけるの大変だ

迅速な対応!

電話1本で、すぐに日程調整。ご訪問いたします。

明朗な会計!

お見積もり後の不当請求は一切いたしません。

丁寧な作業!

お部屋からの運び出しもおまかせで、安心。

お気軽にご連絡ください!!



不用品回収・遺品整理・ハウスクリーニング

片付けコロちゃん

安城市二本木町西切替71-3 株式会社 東洋石油

受付・集荷時間 / 9:00 ~ 17:00(日曜休)

ゴミは早くコロちゃんへ

0120-538-956 TEL: 0566-77-2174
FAX: 0566-77-3459

<https://www.56chan.com/>
Email: gaishoubu@tokk.jp

片付けコロちゃん 検索



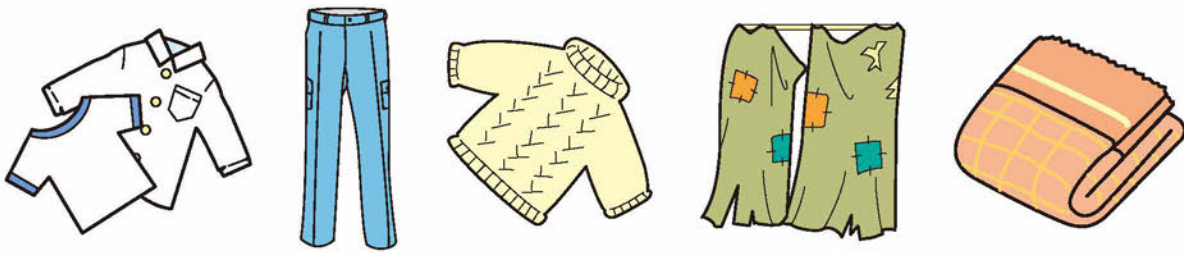
Waste garments

Designated garbage bags: No
Collection points specified by neighborhood association, etc.
or the Non-Burnable Garbage Treatment Plant

* Some neighborhood associations do not collect waste garments. For collection days, see the city website or the Chiryu Newsletter published on the first of each month.

Items that can be thrown away

Clothes, curtains, blankets, towels, futon covers, etc.



Key point!

- Place in a transparent bag and bring directly to the Non-Burnable Garbage Treatment Plant.

Items that cannot be thrown away

- Underwear
- Socks
- Dirty or wet items -> **Burnable garbage** (p. 4)
- Futons and other items containing cotton or feathers -> **Burnable garbage** (p. 4) or **Oversized garbage** (p. 18)





Waste paper

(newspaper, cardboard, cartons, recyclable paper)

**Designated garbage bags: No
Collection points specified by neighborhood association, etc.
or the Non-Burnable Garbage Treatment Plant**

* Some neighborhood associations do not collect waste paper. For collection days, see the city website or the Chiryu Newsletter published on the first of each month.

Items that can be thrown away

Newspaper (including flyers), cardboard, cartons, and recyclable paper (pamphlets, posters, weekly magazines, manga, notebooks, textbooks, phonebooks, etc.)



Newspaper



Cardboard



Cartons



Recyclable paper

Key point!

- Separate into the 4 categories above.
- Cardboard should be tied together before taken out for collection.
- Wet items should be dried before taken out for collection.
- Using paper bags to create a garbage bag for recyclable paper makes it easy to keep all recyclable paper together.



Garbage bag for
recyclable paper
(example)

Items that cannot be thrown away

- Items with aluminum inside, waxed or laminated items, carbon paper, thermal paper, photos, and stickers -> **Burnable garbage** (p. 4)





Four designated types of home appliances

How to throw away TVs, air conditioners, washing machines and dryers, and refrigerators and freezers

The four designated types of home appliances can be disposed of by the following methods.

[1] If buying a replacement, the old item can be collected at the store where the new item was purchased.

[2] If simply throwing an item away, the item can be collected at the store where it was purchased or other store.

If your situation does not fall under either of the above, following the method below.

When disposing of the four designated types of home appliances, the user is responsible for the recycling fee and the transportation fee to the designated collection location. Pay the recycling fee and the transportation fee at a **city post office** to receive a recycling ticket and a collection transportation ticket. Note that recycling fees differ according to the manufacturer; check for the manufacturer before purchasing a recycling ticket. (TVs differ according to size, and refrigerators also differ according to the total rated volume.)

[1] Door-to-door collection (The city goes to the user to collect the item. A reservation in advance is required. Call or go to the Environmental Affairs Division (**Tel: 95-0126**) to make a reservation.

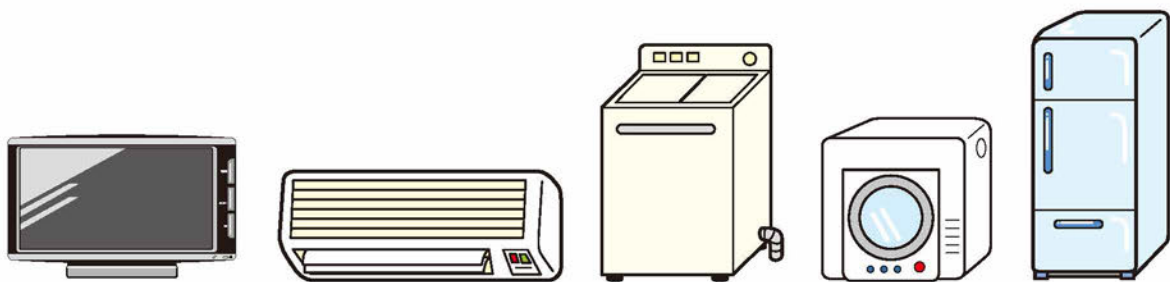
Recycling ticket + collection transportation ticket (2,200 yen)

[2] The user brings the appliance to the Clean Center or the Non-Burnable Garbage Treatment Plant
Recycling ticket + collection transportation ticket (1,200 yen)

[3] The user brings the appliance to a designated collection point (see the table below).
Recycling ticket

● **Contact:** Home Appliance Recycling Ticket Center **Tel: 0120-319-640**

| Designated Collection Point | |
|--|---------------------------------------|
| Nippon Express Mikawa Transport | Toei Co., Ltd. (Okazaki Branch) |
| 107 Nishi-Ueno, Ohira-cho, Okazaki-shi | 16-1 Tateishi, Ohira-cho, Okazaki-shi |
| ☎0564-22-8655 | ☎0564-65-5181 |





Small consumer electronics are collected

Some used small consumer electronics contain valuable or useful metals. The city operates locations in order to collection these resources.

Applicable items

Cell phones, portable audio players, portable video game devices, digital cameras, video cameras, electronic dictionaries, calculators, portable car navigation systems, remotes, AC adapters and other electrical cords



Collection locations

City Hall lobby, the Non-Burnable Garbage Treatment Plant, GALLERIA APiTA Chiryu

Computers

Bring directly to the Chiryu City Non-Burnable Garbage Treatment Plant (p. 1)

- **Application:** Not required (bring directly to the plant)
- **F e e:** Free
- **Conditions:** Make sure to delete all personal information. The city will not take any responsibility.

Apply for home pickup using the Renet Japan delivery service.

- **Application:** Required Apply on the Renet Japan website.
- **F e e:** Free (If the computer is in a box)
- **Conditions:** Total dimensions (L × W × H) must be no greater than 140 cm, and the box must be no heavier than 20 kg.
- **N o t e:** In addition to computers, more than 400 different types of consumer electronics can be collected at the same time if packed in the same box with a total weight of 20 kg or less.
- **Contact:** Renet Japan **Tel: 0570-085-800**
URL:<http://www.renet.jp/>





Garbage that is not collected

Garbage generated through business

For general business waste, companies should bring the waste directly to the Clean Center themselves or entrust it to a waste collector granted permission by Chiryu City.

If you wish to consult regarding the disposal of industrial waste, contact the Waste Management Section at the Nishi-Mikawa, Aichi Prefectural Office (Tel: 0564-27-2877).

Dangerous waste and waste requiring complex disposal

Car and motorcycle parts, tires, pianos, propane gas cylinders, fireproof safes, explosives, batteries, fire extinguishers, Buddhist altars, agricultural equipment, gasoline, petroleum, kerosene, diesel oil, other types of oil, unused fireworks, cans containing waste liquid or paint, powerful drugs, agricultural chemicals, etc.



- Gas cylinders... Contact the Aichi Prefecture LP Gas Association (Tel: 052-261-2896).
- Fireproof safes... Contact the Chubu Safe & Furniture Association (Tel: 052-712-0281).
- Fire extinguishers... Contact the Fire Extinguisher Recycle Promotion Center (Tel: 03-5829-6773).

For other waste requiring complex disposal, contact a specialist, a store, or a waste collector granted permission by Chiryu City.

<Advertisement>



事業系一般廃棄物の収集は当社におまかせ下さい!!

サンスイサービス株式会社



<http://sansui-s.com/>

- 一般廃棄物収集運搬処理業
(知立・名古屋・豊田・常滑・武豊町許可)
- 産業廃棄物収集運搬処理業
(愛知県許可)
- 廃棄物処理関連用品のリース及び販売業
- 前記営業に附帯する一切の業務

本 社：名古屋市緑区鳴海町字母呂後 6 番地
TEL:052-622-0947 FAX:052-623-7225



Quick Guide to Separating Garbage

Use this Quick Guide when unsure of how to throw away a certain item or unsure of how to separate your garbage. If an item is not listed in this Quick Guide, search online using the Chiryu City Garbage Checker or contact the Environmental Affairs Division. * Plastic containers = Plastic containers and packaging



| | Item | Category | Important point | | Item | Category | Important point |
|------------------|-----------------------------------|---|---|--|--------------------|--------------------------------------|--|
| A | Clothes irons | Consumer electronics | | O | MiniDisc cases | Plastic products | |
| | Ironing boards | Oversized garbage | | | Keyboards | Oversized garbage | |
| | Empty cans | Aluminum cans | | | Extension cords | Electrical cords | |
| | | Steel cans | | | PVC pipes | Oversized garbage | Limited to households |
| | Acrylic plates | Plastic products | | | Oil cans | Metal | Remove the contents of the can. |
| | Hemp twine | Burnable garbage | | | Oil heaters | Oversized garbage | |
| | Pressure cookers | Metal | | | Toys | Plastic products | Batteries are considered Hazardous Waste |
| | Protective shoes | Burnable garbage | Shoes are all considered Burnable Garbage | | Bowls (plastic) | Plastic products | |
| | Screen doors | Oversized garbage | | | Bowls (wood) | Burnable garbage | |
| | Aluminum foil | Burnable garbage | Thick aluminum foil items such as for yaki udon are considered Metal | | KA | Curtains | Waste garments |
| I | Rocks | Landfill waste | | Burnable garbage | | | |
| | Chairs | Oversized garbage | | Carpet | | Oversized garbage | |
| | 1-sho bottles (1.8 liter bottles) | Glass bottles used for food and beverages | Remove all caps | Heat packs | | Burnable garbage | |
| | Earphones | Electrical cords | | Mirrors | | Glass & ceramics | |
| | Clothes | Waste garments | | Baskets | | Plastic products | Baskets may be considered Burnable Garbage depending on the material. |
| Burnable garbage | | | Umbrellas | Wire | | Remove the fabric/plastic component. | |
| U | Flowerpots | Glass & ceramics | | Plastic items are considered Plastic Products | | Oversized garbage | |
| | Inner tubes | Burnable garbage | | Batteries (alkaline) | | Hazardous waste | |
| | Fans (paper fans) | Burnable garbage | | Canned food | | Aluminum cans | |
| E | Air conditioners | Four designated types of home appliances | Users are charged a fee.(P21) | | Steel cans | | |
| | Paint tubes | Burnable garbage | | Instant noodle cups | Plastic containers | | |

| | Item | Category | Important point | | Item | Category | Important point | |
|----|---|---|---|----------------|----------------------|---|--|--|
| | Bags | Burnable garbage | Plastic items are considered Plastic Products . | | Cushions | Burnable garbage | | |
| | Gauze | Burnable garbage | | | Transparent folders | Burnable garbage | | |
| | Gas stoves | Metal | Stoves with two or more burners are considered Oversized Garbage . | | Crystal glass | Landfill waste | | |
| | Cassette tapes | Burnable garbage | Cases are also considered Burnable Garbage . | | KE | Fluorescent tubes | Hazardous waste | |
| | Desiccants | Burnable garbage | | | | Diatomite bath mats | Glass & ceramics | Limited to 1 mat. Multiple mats are considered Landfill Waste . |
| KI | Wood | Burnable garbage | Items that do not fit in the designated garbage bags are considered Oversized Garbage (Limited to those no more than 2 m in length and 15 cm in diameter.) | Cell phones | Consumer electronics | Can be thrown away as Small Consumer Electronics . | | |
| | Stepladders | Oversized garbage | | Shoe shelves | Oversized garbage | | | |
| | Vanities | Oversized garbage | Remove the mirror from items that cannot be reused before bringing in. | KO | Tools | Metal | Remove any objects generated through business. | |
| | Safes | Metal | Fireproof safes are not collected | | Perfume bottles | Glass & ceramics | | |
| KU | Pumps (bicycle pumps) | Metal | Items that do not fit in the blue bins are considered Oversized Garbage | | Golf bags & clubs | Oversized garbage | | |
| | Glass bottles (medical products) (oral drugs) | Glass bottles used for food and beverages | Glass bottles for medical creams (other than oral drugs) are considered Glass & Ceramics | Golf balls | Burnable garbage | | | |
| SA | | | | Kotatsu tables | Oversized garbage | | | |
| | | | | Sideboards | Oversized garbage | | | |
| | | | | Glow sticks | Burnable garbage | | | |
| | | | | Soccer balls | Burnable garbage | | | |

<Advertisement>

処分したい自転車・車イスありませんか？

じ 自転車
く 車イス
ば バイク

無料ひきとり

こわれていてもOK!
お電話一本でひきとりに行きます!

お問い合わせ
引き取り依頼は

0566-77-2330

クロネコサイクル 古物商:愛知県公安委員会543831302400

クロネコサイクル

検索

スマホから24時間受け付けます!→



就労継続支援B型事業所



工房 げんせき

自転車と車イスの再生をおこなう事業所です
愛知県東城市東新町9番地25 tel:0566-57-2084

| | Item | Category | Important point | | Item | Category | Important point | |
|----|----------------------------|----------------------|-----------------|-----------------------|-----------------------|--|---|--|
| | Magazines | Waste paper | | SE | Detergent containers | Plastic containers | | |
| | | Burnable garbage | | | Washing machines | Four designated types of home appliances | | Users are charged a fee.(P21) |
| | Cushions (throw pillows) | Burnable garbage | | | Clothespins | Burnable garbage | | |
| | | Oversized garbage | | | Vacuum cleaners | Oversized garbage | | Can be thrown away as Consumer Electronics if the item fits inside the blue bin. |
| SI | CD · DVD | Plastic products | | SO | Sofas | Oversized garbage | | |
| | Magnets | Metal | | | Thermometers | Consumer electronics | | Thermometers with mercury inside are only collected by the Non-Burnable Garbage Treatment Plant. |
| | Mats | Burnable garbage | | TA | Scales | Metal | | |
| | Charcoal grills (portable) | Landfill waste | | | Tires | Not collected | | P23 |
| | Bicycles | Oversized garbage | | Towels | Tatami mats | Waste garments | | |
| | Car parts | Not collected | | | | P23 | | Burnable garbage |
| | Photos | Burnable garbage | | Tupperware containers | Tablets | Plastic products | Can be thrown away as Small Consumer Electronics . | |
| | Shampoo containers | Plastic containers | | | | Including the pump | | Consumer electronics |
| | Chargers | Electrical cords | | Cooking oil | Egg cartons (plastic) | Plastic containers | | |
| | Shredded paper waste | Burnable garbage | | | | Cupboards | | Waste paper |
| | Fire extinguishers | Not collected | | P23 | Cardboard | | Burnable garbage | |
| | Food trays | Plastic containers | | SU | | Chains | Wire | |
| | Artificial grass | Burnable garbage | | | Water tanks | | Child car seats | Oversized garbage |
| | | Water tanks | | Glass & ceramics | | Plastic items are considered Plastic Products . | | Syringes and needles |
| | | | | Metal | | Dustpans | Plastic products | |
| | Rice cookers | Consumer electronics | TU | Desks | | | | Oversized garbage |
| | Ski boots | Burnable garbage | | | Fishing rods | Oversized garbage | | |
| | Bamboo screens | Oversized garbage | TE | TVs | | Four designated types of home appliances | | Users are charged a fee.(P21) |
| | Charcoal | Burnable garbage | | | Suitcases | Oversized garbage | | |
| | Suitcases | Oversized garbage | | | | | | |

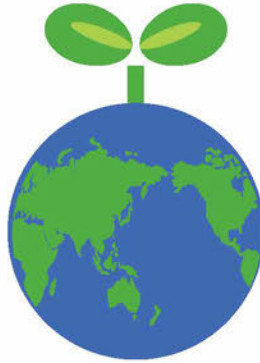
| | Item | Category | Important point |
|----|---------------------------------|----------------------|--|
| | Electric blankets | Burnable garbage | |
| | Heated floor mat | Oversized garbage | |
| | Electrical cords | Electrical cords | |
| | Light bulbs | Hazardous waste | |
| TO | Copper wires | Wire | |
| | Dead animals | Not collected | Animals found dead outside are collected by the Environmental Affairs Division. |
| | Earthenware | Glass & ceramics | |
| | Screwdrivers | Metal | |
| | Hair dryers | Consumer electronics | |
| | Paint cans | Metal | Remove the contents of the can. |
| NA | Knives | Metal | |
| | Sinks | Oversized garbage | |
| | Kitchen waste | Burnable garbage | |
| | Corrugated sheets | Oversized garbage | |
| NI | Bath salt cans | Steel cans | Those items with a plastic identification code attached are considered Plastic Containers . |
| | Dolls | Plastic products | |
| NU | Stuffed animals | Burnable garbage | |
| | Cloth | Waste garments | |
| | | Burnable garbage | |
| NE | Cat litter | Burnable garbage | Limited to paper litters |
| | Modeling clay (paper/oil-based) | Burnable garbage | Other types are considered Landfill Waste . |
| NO | Agricultural equipment | Not collected | P23 |
| | Agricultural chemicals | Not collected | P23 |
| | Saws | Metal | |

| | Item | Category | Important point |
|----|-------------------------------|--------------------------------------|---|
| HA | Ash | Landfill waste | |
| | Motorcycles (including parts) | Not collected | P23 |
| | Computers | Non-Burnable garbage Treatment Plant | See P22 for more information. |
| | Batteries | Not collected | P23 |
| | Styrofoam | Plastic containers | Always place in designated garbage bags. |
| | Fireworks | Burnable garbage | Unused items are not collected. |
| | Toothbrushes | Plastic products | |
| | Cutlery | Metal | |
| | Insecticide cans | Metal | |
| | Clothes hangers (plastic) | Plastic products | |
| | Clothes hangers (metal) | Wire | |
| HI | Pianos | Not collected | P23 |
| | Polypropylene bands | Burnable garbage | |
| | Video cameras | Consumer electronics | Can be thrown away as Small Consumer Electronics . |
| | Video tapes | Burnable garbage | Cases are also considered Burnable Garbage . |
| | Hibachi braziers | Glass & ceramics | |
| | Fertilizers | Landfill waste | |
| | Beach balls | Burnable garbage | |
| FU | Files | Burnable garbage | |
| | FAX | Consumer electronics | |
| | Buddhist altars | Not collected | P23 |
| | Futons | Oversized garbage | |
| | Futon covers | Waste garments | |
| | | Burnable garbage | |
| | Planters | Plastic products | |

| | Item | Category | Important point |
|----|-----------------------|----------------------|---|
| | Printers | Consumer electronics | |
| | Bathtub lids | Oversized garbage | |
| HE | Beds | Oversized garbage | |
| | Plywood | Oversized garbage | |
| | Helmets | Plastic products | |
| | Paint | Not collected | P23 |
| | Toilet seats | Plastic products | |
| HO | Hubcaps | Not collected | P23 |
| | Brooms | Burnable garbage | |
| | Knives (kitchen) | Metal | |
| | Bowling balls | Landfill waste | |
| | Ballpoint pens | Plastic products | |
| | Ice packs | Burnable garbage | |
| | Polyethylene tanks | Plastic products | Items too big to fit in the blue bins are considered Oversized Garbage . |
| MA | Pillows | Burnable garbage | |
| | Cutting boards | Burnable garbage | Plastic items are also considered Burnable Garbage . |
| | Miniature light bulbs | Hazardous waste | |
| MI | Sewing machines | Consumer electronics | |
| | Miniature toy cars | Plastic products | |
| MU | Magnifying glasses | Plastic products | Items with glass lenses are considered Glass & Ceramics . |
| ME | Glasses | Plastic products | |
| MO | Motors | Not collected | P23 |
| | Blankets | Waste garments | |
| | | Burnable garbage | |
| | Monitors | Consumer electronics | |
| | Drying poles | Oversized garbage | |
| | Drying racks | Landfill waste | |

| | Item | Category | Important point |
|----|------------------------|--|---|
| YA | Kettles | Metal | |
| | Baseballs | Burnable garbage | |
| YU | Teacups | Glass & ceramics | |
| YO | Outfits | Waste garments | |
| | | Burnable garbage | |
| | Reed screens | Oversized garbage | |
| RA | Lighters | Landfill waste | |
| | Rackets | Plastic products | Tennis or badminton rackets |
| | Boomboxes | Consumer electronics | |
| RI | Remotes | Consumer electronics | Can be thrown away as Small Consumer Electronics . |
| | Backpacks | Burnable garbage | |
| RE | Refrigerators | Four designated types of home appliances | Users are charged a fee.(P21) |
| | Bricks | Landfill waste | |
| RO | Lockers | Oversized garbage | |
| | Candles | Burnable garbage | |
| WA | Wire | Wires | |
| | Word processor devices | Consumer electronics | |





Chiryu City Garbage Disposal Guide

Issued July 2019

Issued by

Environmental Affairs Division, Citizen Affairs Department, Chiryu City
3-1 Hiromi, Chiryu-shi, Aichi Prefecture, 472-8666
TEL:0566-95-0126

Scinex Corporation
3-6-13, Kawaraya-machi, Chuo-ku, Osaka-shi, Osaka Prefecture 542-0066
TEL:06-6766-3346

Advertising and Sales

Tokai Office, Scinex Corporation
2293-8 Nakamura-cho, Yokkaichi-shi, Mie Prefecture, 512-8044
TEL:059-361-1144

* The illustrations in this booklet are mainly taken from those published on the website of the Ministry of Economy, Trade and Industry.

Do not copy or reprint without permission.

限りある自然を大切に
いつも美しく快適な環境を…
知立衛生がご提案いたします。



快 適 環 境 提 案 企 業

知立衛生株式会社

一 事業内容 一

- ◆ 一般廃棄物収集・運搬
- ◆ 産業廃棄物収集・運搬
- ◆ 浄化槽清掃、維持管理、施工
- ◆ 高架・受水槽清掃工事
- ◆ 排水管清掃工事(パイプクリーニング)
- ◆ 下水道・側溝、用・悪水路、暗渠浚渫清掃
- ◆ 各種排水処理層清掃工事
- ◆ 土工コンクリート工事
- ◆ 各種衛生陶器類販売・施工
- ◆ 各種空気清浄機・消臭剤販売
- ◆ 環境保護・美化コーティング工事



知立市マスコットキャラクター
「ちりゅっぴ」



☎ 0566-81-1426

FAX 0566-82-1919

知立市山屋敷町見社21番地



不用品の片付け、つまり、水漏れなど、お困り事はお気軽にご相談ください