

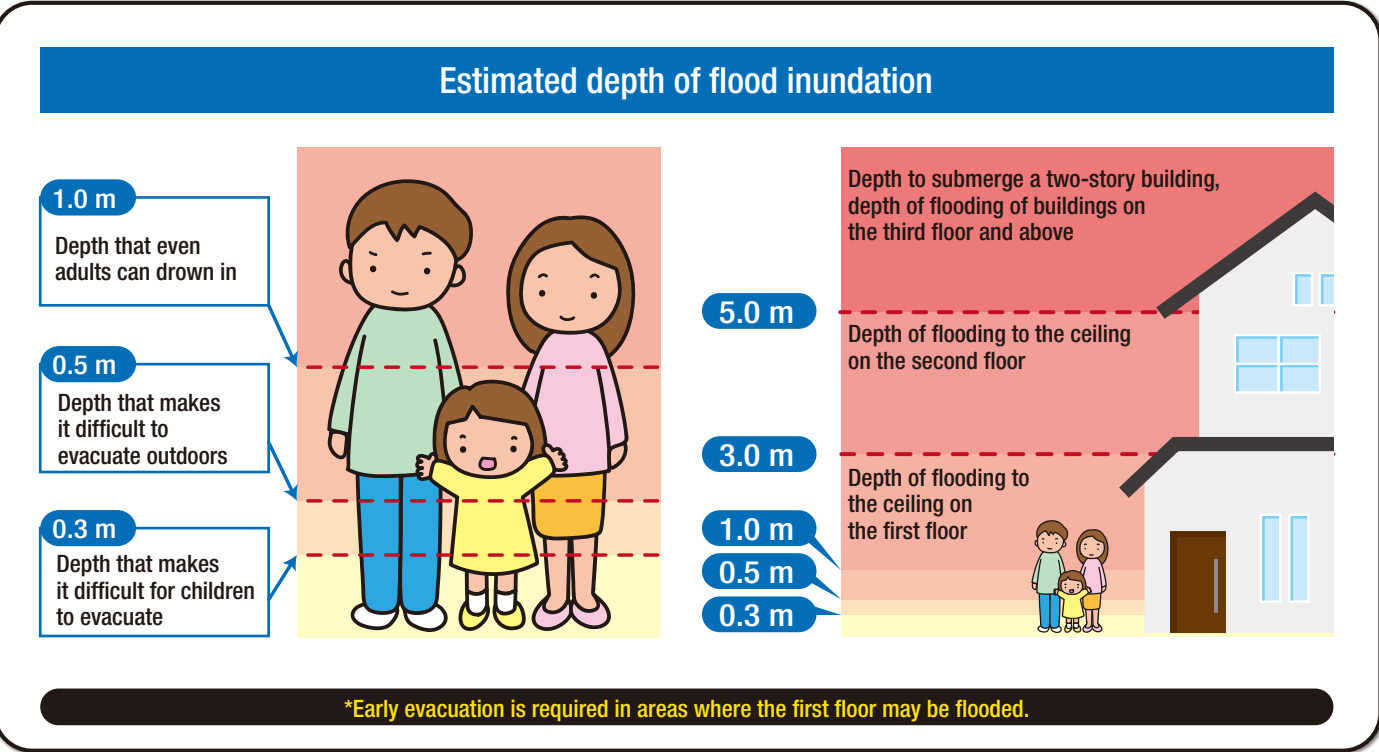
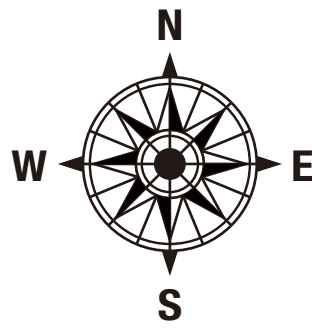


Chiryu City Flood Hazard Map

This map shows the most dangerous flood conditions (flood range and flood depth) that can occur when rivers such as the Aizuma River, Aizumaogawa River, Sawatari River, Fukido River, and Wareme River, which are class B rivers, and Yahagi River, which is a class A river, are flooded by **the largest rainfall of about once every 1000 years**, and the water overflows or the embankment is broken.

Basin name	River name	Precipitation for calculation
Aizuma River basin	Aizuma River, Aizumaogawa River	24-hour total basin rainfall: 765 mm
Sawatari River basin	Sawatari River, Fukido River, Wareme River	24-hour total basin rainfall: 822 mm
Yahagi River basin	Yahagi River	48-hour total basin rainfall: 683 mm

- This map shows the maximum flood range and flood depth by superimposing the expected flood inundation area map stipulated in Article 14, Paragraph 1 of the Flood Control Act and the map showing the areas expected to be flooded published by Aichi Prefecture. This flooding does not always occur at the same time.
- The flood range and flood depth shown on the map are based on calculation results, and depending on how it rains, inundation may occur even in areas where inundation is not expected, or the estimated depth may differ from the actual depth.
- For past inundation areas, please refer to the "Flood Information Map" in Map Aichi or the Aichi Prefecture Integrated Geographic Information System.
URL: <https://maps.pref.aichi.jp>



Flood depth legend

5.0 m – 10.0 m
3.0 m – 5.0 m
1.0 m – 3.0 m
0.5 m – 1.0 m
0.3 m – 0.5 m
– 0.3 m

Legend	
	Administrative boundary
	City hall
	Fire station
	Dangerous areas for evacuation (underpass)
	Dangerous areas for evacuation (underground crosswalk)
	Designated evacuation shelter
	Temporary evacuation sites (when wind and flood disasters occur)
	Facilities for vulnerable people
	Emergency supplies storehouse
	Flood control warehouse
	Water level station
	Crisis management type water level gauge
	Private railroad
	JR
	Kinura-Toyota road
	National road
	Prefectural road, main regional road
	River and other area
	Class B river (prefecture management)
	Provisional class river (city management)

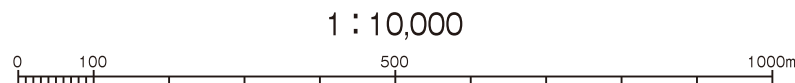
For details of this map and other language versions (Japanese and Portuguese), please check Chiryu City's Flood Hazard Map website.



Facilities for vulnerable people

No.	Name	Location	Flood depth
	Chiryu City Health Center	11-2 Sakuragi, Sakuragi-cho	1.0 m – 3.0 m
	Chiryu City Cattle Works		
	Komorebi Daiichi	66-4 Sakuragi, Sakuragi-cho	3.0 m – 5.0 m
	Chiryu Nursery School	3 Shinkawa, Nishimachi	3.0 m – 5.0 m
	Yatsuhashi Nursery School	8-1 Shiroshta, Yatsuhashi-cho	1.0 m – 3.0 m
	Sakuragi Kindergarten	15-3 Hanayama, Nakamachi	1.0 m – 3.0 m
	Ai-no-ke Group Home Chiryu Nishimachi	19-1 Shinkawa, Nishimachi	1.0 m – 3.0 m
	Prestige Suehirokan	33-1 Kameike, Nishimachi	1.0 m – 3.0 m
	ONZiji Act Chiryu Shop	38 Izumi, Yatsuda-cho	1.0 m – 3.0 m
	Iwase Surgical Clinic	1-3 Shinkawa, Nishimachi	3.0 m – 5.0 m

*Facilities for vulnerable people are social welfare facilities, schools, medical facilities, and other facilities that are mainly used by people who need consideration for disaster prevention, as stipulated in Article 15, Paragraph 1 of the Flood Control Act.
*In order to ensure smooth and prompt evacuation of users, the above facilities are obliged to formulate an "Evacuation Security Plan" that defines necessary items and to conduct regular training at least once a year.



Temporary evacuation sites (when wind and flood disasters occur)

No.	Name	Location	Phone
	Shinbayashi Community Center	54-2 Hirakusa, Shinbayashi-cho	82-6932
	Nanyo District Community Center	2-100 Shinike	82-0097

List of designated evacuation shelters

No.	Name	Location	Phone
	Chiryu Elementary School Gymnasium	70 Hanayama, Nakamachi	81-1371
	Sawatari Elementary School Gymnasium	115 Kobari, Kamishigehara-cho	81-1372
	Raikoji Elementary School Gymnasium	5-1 Sotoyama, Raikoji-cho	81-1373
	Chiryu Higashi Elementary School Gymnasium	9-1 Showa	81-3694
	Chiryu Nishi Elementary School Gymnasium	1-13-2 Torii	82-0575
	Yatsuda Elementary School Gymnasium	45 Kawaguro, Yatsuda-cho	82-6807
	Chiryu Minami Elementary School Gymnasium	55-1 Shinbayashi, Shinbayashi-cho	83-0616
	Chiryu Junior High School Gymnasium	2-4 Hiromi	81-1370
	Ryuhoku Junior High School Gymnasium	2-2 Higashiyama, Yamayashiki-cho	82-8131
	Chiryu Minami Junior High School Gymnasium	20-1 Honbayashi, Shinbayashi-cho	82-5155
	Chiryu High School Gymnasium	2-5-8 Kobo	81-0319
	Chiryu Higashi High School Gymnasium	18-6 Oyama, Nagashino-cho	82-0568
	Kamishigehara Nishi Nursery School	60-4 Shirogo, Kamishigehara-cho	82-9246
	Chiryu Minami Nursery School	35 Shinmei, Yatsuda-cho	81-4056
	Aizuma Nursery School	8 Nishiki, Aizuma-cho	82-2733
	Takane Nursery School	218 Takane, Ushida-cho	82-4417
	Sugi Pharmacy Chiryu Fukushima Arena (Chiryu City Welfare Gymnasium)	10-5 Kusakari, Nishimachi	82-5151
	Chiryu Cultural Plaza	28-1 Idojiri, Yatsuhashi-cho	83-2673
	Nishioka Cultural Center	32-1 Nishioka, Nishioka-cho	82-1200
	Sawatari Community Center	118-6 Kobari, Kamishigehara-cho	83-0676
	Chiryu City Library	2-3-3 Minamishinchi	83-1131
	Yatsuhashi Public Housing Meeting Room	8-81 Yamadatani, Yatsuhashi-cho	
	Showa Children's Center	7-1 Showa	81-1380
	Kamishigehara Community Center	38 Hongo, Kamishigehara-cho	82-2552
	Aizuma Community Center	11-3 Nishiki, Aizuma-cho	82-1960
	Nishinaka Community Center 1	27-2 Tenjin, Nishinaka-cho	83-2367

Please contact Chiryu City Hall (0566-83-1111) or check the "Chiryu City website" for the status of evacuation shelters.